

# FLEXI | TILE<sup>TM</sup>

The Interlocking Floor Tile



## Standard Installation Instructions



## BEFORE INSTALLATION

### What do I need to consider before installation? To Glue or Not to Glue?

All Flexi-Tile interlocking tiles can be loose laid without adhesive, however you may consider this in specific situations, such as below...

#### Areas that experience heavy loads/trucks:

In areas of industrial activity where heavy loads, pallets trucks and machines with tight turning circles operate, it's important to have an immovable floor surface that can withstand extreme pressures on a daily basis. For flooring in these areas, we suggest that you check out our wheel guide on page 9 and if you require further info contact our sales team.

**Direct Sunlight:** We advise the use of adhesive in areas that are exposed to direct sunlight, such as shop fronts, atriums etc. In direct sunlight Flexi-Tiles may expand causing warping or dislocation of the interlocking system.

**Areas of high temperatures:** In the immediate area where there is a source of heat (eg - directly in front of a furnace or oven), it is advisable to apply adhesive to Flexi-Tiles.



#### Required Tools:

- Rubber Mallet to interlock tiles
- Chalk to mark cutting areas and align tiles
- Cutting Board to ensure safety
- Tape Measure to make sure dimensions are correct

#### Flexi-Tiles can be cut using various methods

- Jigsaw or Bandsaw (Advisable for Flexi-Tile 7 and 10 tiles)
- Stanley Knife (Advisable for Flexi-Tile 5 tiles)
- Heavy-Duty Guillotine



# FLEXI TILE™

The Interlocking Floor Tile

[www.flexi-tile.com](http://www.flexi-tile.com)



*Flexi-Tiles can be laid on damaged or cracked subfloor surfaces...  
For best results it is advised to install on a level and clean floor*

**Simply follow the below steps to achieve a durable, clean and adaptable flooring finish...**

**Clean:** sweep the existing floor to ensure that the surface is clean and free of dust and dirt.

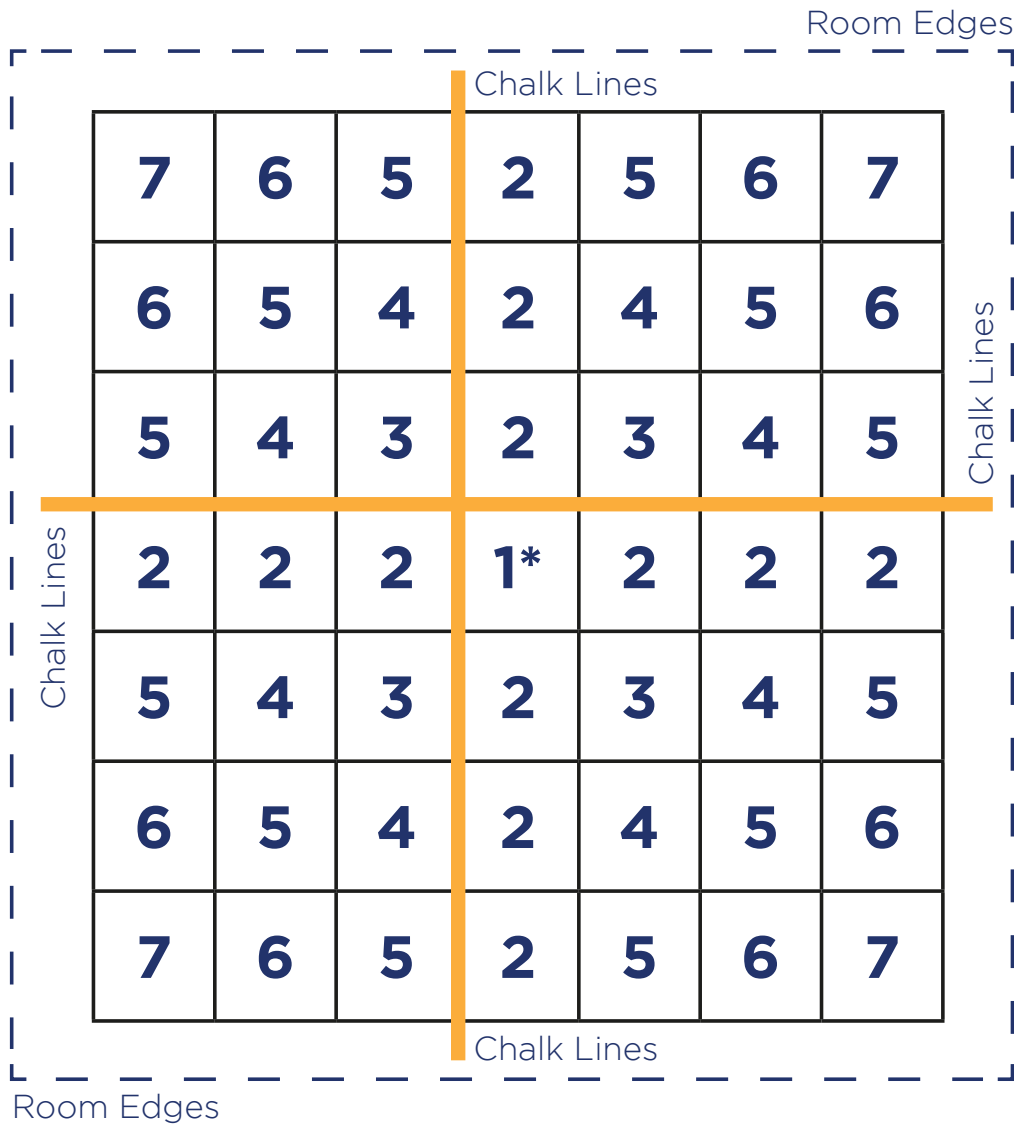
**Surface check:** Flexi-Tile interlocking flooring can be laid on uneven surfaces (A gradient of up to 7mm per 2m of concrete subfloor and 5mm per 2m for wood subfloor). We recommend using a self-levelling repair compound in areas where there are variations in subfloor surface. If not addressed, floor tiles may 'dislocate' at the interlocks (The smoother the subfloor, the better your Flexi-Tile floor will be).

**Temperture:** We advise that Flexi-Tiles are laid in areas that have an ambient temperature between 16°C-24°C (*Let the tiles acclimatise for at least 24-48 hours before laying*). If the temperature is towards the lower end of the stipulated scale, we advise splitting the pallet, letting the tiles acclimatise quicker in the lower temperatures.

**Humidity:** Relative humidity in the room should not be more than 60% (ideal 30% to 60%)

**Subfloor humidity:** for loose-lay installation: up to 7% (CCM method) / For glued installation: < 2% (CCM method)

## Layer Guide



### Room Edges

1. Make sure your chalk lines are completely straight
2. Add tiles to all sides of 'Tile 1', creating a cross shape using tiles numbered '2'. (The numbers denote the order in which you add the tiles)
3. Align the tiles with the chalk markings, making sure they are all in line. This will ensure there are no issues later in the installation
4. Build out the tiles in the order stated in the 'Laying Guide' diagram
5. When laying, cut tiles to fit the edges of the room, leaving a gap between 5-10 mm for expansion
6. If your installation involves using ramps, these must be laid initially and then the tiles are laid backwards from the ramps, using the appropriate steps above.



# FLEXI TILE<sup>TM</sup>

The Interlocking Floor Tile

[www.flexi-tile.com](http://www.flexi-tile.com)

## Doorways

In doorways, an edging tile can be used if tiles are to meet a different floor covering. If the tiles are to continue through a doorway, no edging is required but the tiles in the doorway should be glued.

**Application of edge gap sealant:** The 5mm gap between the tiles and fixed points can be sealed with an acrylic putty or silicone sealant. Please wipe off excess sealant immediately with a damp cloth.

## When to apply tile sealant

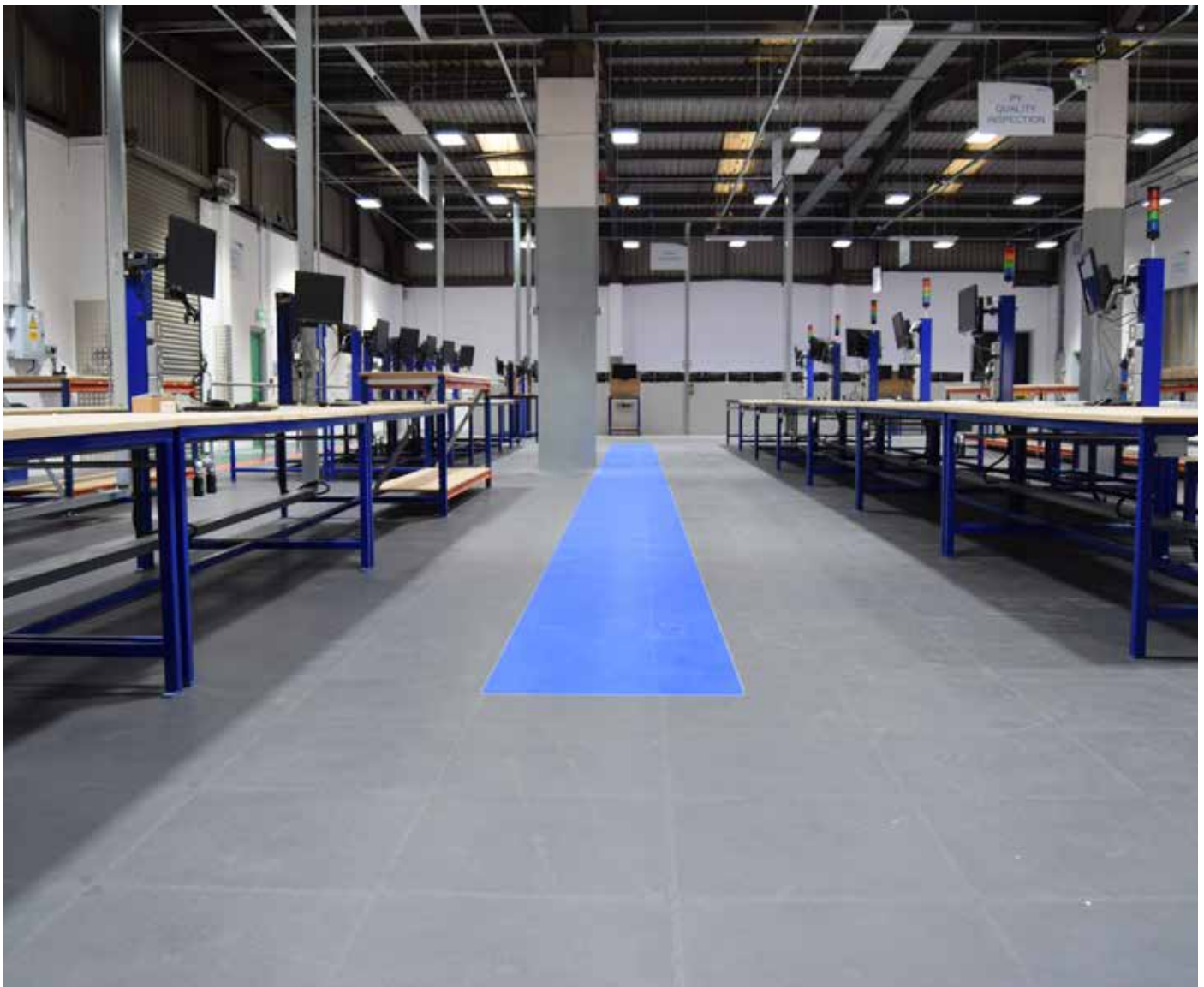
We advise to apply sealant to all light tiles especially in areas where vehicles will be located as tyres may leave marks.

## Post completion of work

For best results leave the installation area in good condition by removing all debris and any residual dust.

## Cleaning and maintenance

Flexi-Tile floors can be cleaned and maintained easily using a damp mop, preferably using a pH balanced floor cleaning product. (Flexi-Tile floors can easily withstand cleaning using an industrial rotary mop). For best results give the floor a light clean frequently.





# FLEXI TILE<sup>TM</sup>

The Interlocking Floor Tile

[www.flexi-tile.com](http://www.flexi-tile.com)

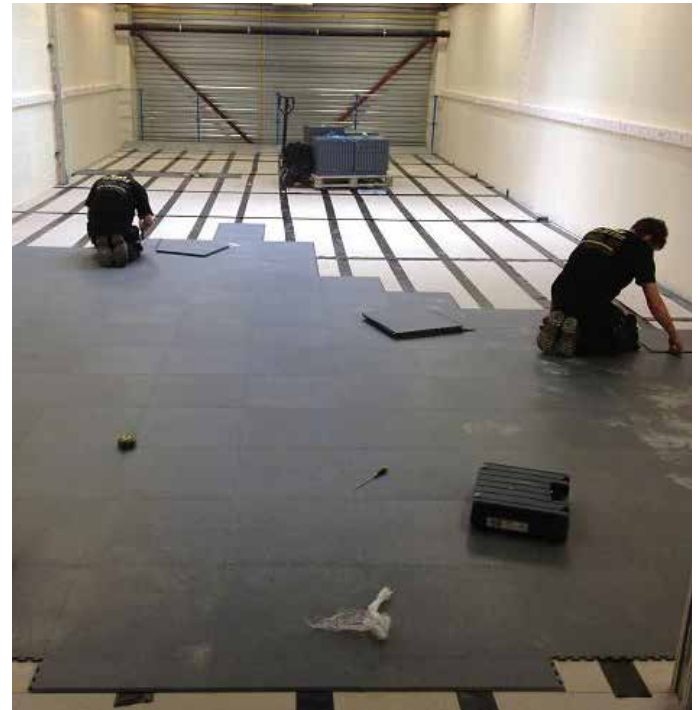
## ESD INSTALLATION

1. Lay the ESD grounding strip then follow standard installation steps.
2. Grounding strips should be laid in a grid-like format, with a 1m horizontally and 0.5m vertically between each line of tape. The grounding strips have to touch each individual tile to ensure the floor is fully conductive.
3. Continue with the rest of the standard steps until the last corner tiles.
4. Fit your special grounding tiles (ESD grounding set) in the corner of the room.
5. 1 x grounding tile (ESD grounding set) should be fitted every 80-100m<sup>2</sup> or to each individual room. Connect the plug to the wall socket and the lead to the connector on the tile to ensure full conductivity of the floor.

A suitable power source should be recommended by an electrician.

**Helpful Hint:** Use double-sided tape to each end of the grounding strips to stop them from moving. Once you have made the grid you can begin to lay the tiles.

Starting from the center of the room put the first four tiles in a square, which ensures that the interlocks are laid on the ground strip to the center (ie, all four tiles are in contact with the ground strip). From the centre working outwards, ensure that the interlocking connections remain in contact with the conductive ground strip.



## HOW TO USE THE FLEXI-TILE ESD KIT



### ESD KIT INCLUDES:

1 x Roll of ESD grounding kit

1 x Grounding ESD plug

1 x Grounding Bracket

1 x Strip of Conductive Tape



**1.** Find a suitable power socket to insert the grounding ESD plug



**2.** Place plug in socket (if in the UK, an additional plug adapter will be supplied)



**3.** Place grounding bracket using the conductive tape to the bottom of the tile closest to the socket



**4.** Install with the bracket touching the underside of the tile, connected to the floor



**5.** Turn on socket - you now have an electro static dissipative area



## TECHNICAL HELP SHEET



# TEMPERATURE GUIDELINES

## Underfloor Heating guidelines

Are Flexi-Tiles suitable for use in rooms where under floor heating is going to be used? **YES!** The PVC in Flexi-Tiles makes them very effective conductors of heat and ideal for use with underfloorheating systems.

1

The underfloor heating **MUST** be turned on and allowed to reach a warm temperature (at least 20°C) before you install the floor.

2

The tiles must be fully acclimatised (stored for 24 hours within the room where they are to be fitted) and ideally should reach the same temperature as the underfloor heating.

3

Individually lay out all the tiles that need to be cut (not in stacks) so that they can reach the same temperature as the floor. Leave them for at least 5 hours to acclititise.

4

Follow the standard Flexi-tile installation instructions. Install all full size tiles **BUT** do not make any of the cuts yet. Allow the installed tiles to settle whilst the underfloor heating is still on.

5

Cut the tiles ensuring that you leave a 10mm expansion gap between the tiles and any fixed point in accordance with our installation guidelines.

6

Once the cut tiles have been installed, you can begin to decrease the temperature of the underfloor heating gradually (approx. 2°C at a time) until you have reached the desired ambient temperature.







	PEDESTRIAN	PALLET TRUCKS CARRYING MORE THAN 800KG ELECTRIC PALLET TRUCKS CARRYING MORE THAN 700KG	FORKTRUCKS CARRYING UP TO 350KG	RUBBER-TYRED FORKTRUCKS (3 WHEEL 350KG-800KG) (4 WHEEL 350KG-900KG)	RUBBER-TYRED FORKTRUCKS (3 WHEEL 800KG+) (4 WHEEL 1000KG+) ALL STEEL/ NYLON WHEELS	A REACH TRUCK OR CRANE IS IN USE	EXPOSED TO HIGH TEMPERATURES OR DIRECT SUNLIGHT
<b>FLEX-TILE 5</b>	✓	●	✓	●	●	●	●
<b>FLEX-TILE 7 / ECLIPSE 7</b>	✓	●	✓	✓	●	●	●
<b>FLEX-TILE 10</b>	✓	✓	✓	✓	✓	✓	●

KEY: ✓ = LOOSE LAID  
● = ADHESIVE

PEDESTRIAN ONLY: ECLIPSE MINI & FLEXI-TILE OPEN / COMFORT

## Liquid spillage

Our Flexi-Tile tiles are made of PVC, hence their resistance to most liquids and chemicals.

The interlocking system has a tight fit but cannot be considered as waterproof. However moisture ingress should be able to evaporate through the joints in normal circumstance. Excessive spills or splashes should be cleaned up immediately. Volatile liquids such as gasoline may seriously damage the tiles.

If you want to prevent any liquid from seeping under the tiles, adhesive must be used. We recommend the F Ball F74 Styccobond adhesive. This can be used throughout the Flexi-Tile product range.

If you have any questions, do not hesitate to contact the Flexi-Tile team who can advise you.



## Recommended use of sealant

For garage installations we recommend the use of Dr. Schutz sealant to protect all light grey and coloured tiles, as some tyres contain chemicals that may leave marks.

**FLEXI | TILE** <sup>TM</sup>

The Interlocking Floor Tile

[www.flexi-tile.com](http://www.flexi-tile.com)

Flexi-Tile is manufactured by Unicorn Group  
Riverview, The Green, Lisburn, BT27 5SR, Northern Ireland, UK

**Phone:** 028 9262 5898

**E-Mail:** [info@flexi-tile.com](mailto:info@flexi-tile.com)